

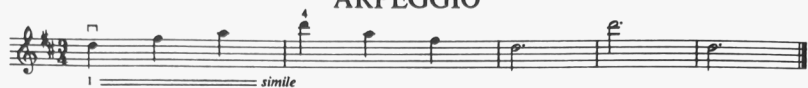
## 'A' AND 'E' STRINGS

Play the 'A' string tetrachord followed by that of the 'E' string and the result is the SCALE OF D MAJOR



Practise also with 2 and 4 notes per bow

## ARPEGGIO

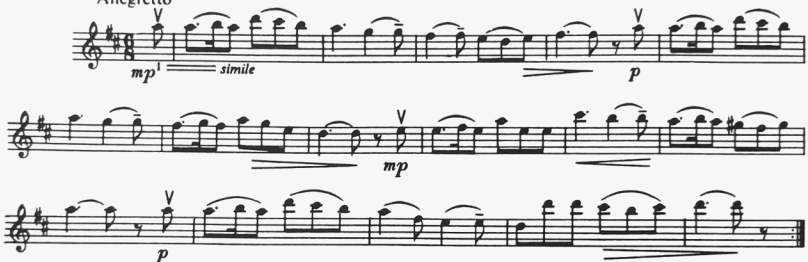


Practise also using a bow to each bar.

## GERMAN FOLK SONG

Start the up-bow in the Lower Half. In bars 4, 8 and 12, lift your bow off during the quaver rest so that the following quaver may start in the Lower Half bow. Stretch the 4th finger for G# in bar 11.

Allegretto



## SWISS AIR

Allegro moderato



## THE 'G' STRING

Keep your left elbow tucked under the violin and let the thumb slide under the neck. This will ensure a good left hand position and correct finger action.

