

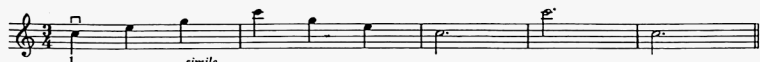
'A' and 'E' STRINGS

Play the 'A' string tetrachord followed by that of the 'E' string and the result is the Scale of C major.



Practise also with 2 and 4 notes per bow.

ARPEGGIO



Practise also using a bow to each bar.

GORDON'S STRATHSPEY

Allegretto

Play in the Upper two thirds of the Bow.



The semiquavers should be played as short as possible.

Observe the accents and staccato markings in order to produce the 'snap' effect in the Strathspey rhythm

DUNCAN'S REEL

Play in the Upper Half part of the Bow.

Allegro spiritoso

